

VILLAS | HOTEL BOUTIQUE | RESTAURANTS | BAR | SPA & FITNESS



LEGEND HILL

RESORT & SPA *****

MAURITIUS

Chamarel Villa No. 3

677.3m² | Lagoon view
5 bedrooms | 5 bathrooms

CONTENTS

01

MAURITIUS

03

THE CONCEPT

05

CHAMAREL VILLA NO. 3

11

LEGEND HILL UNIVERSE

21

EXCLUSIVE PRIVILEGES



LEGEND HILL
RESORT & SPA *****
MAURITIUS



MAURITIUS

PERLE OF THE INDIAN OCEAN

The legendary island of Mauritius is home to an exceptional lifestyle. This global tourist destination is renowned for its many wonders, which will amaze you.

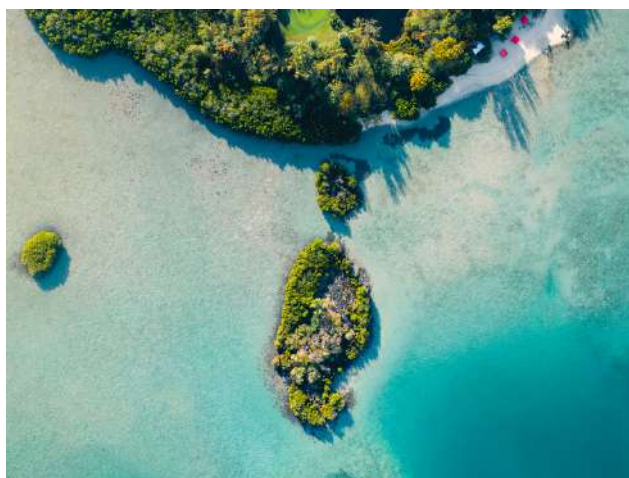
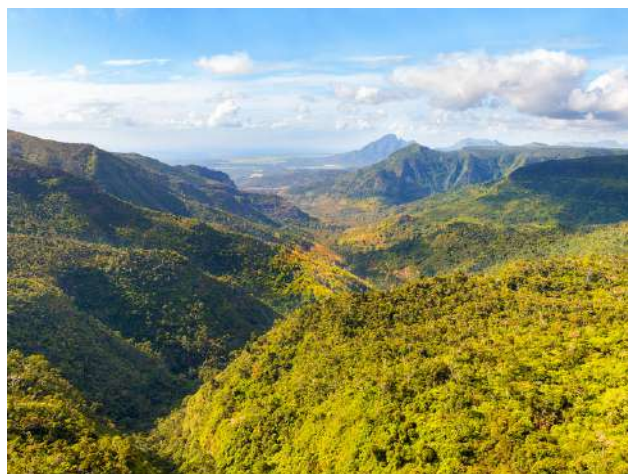
Its flag's colours perfectly reflect the country's history and authenticity:

- Red recalls the heroic struggle of the Mauritian people in March 1968 for independence and freedom.
- Blue stands for the breathtaking beauty of the lagoon and the Indian Ocean.
- Yellow evokes the island's newly acquired freedom and prosperity after its independence.
- Green symbolizes one of the country's main assets: agriculture, which colours the landscape all year round.

In short, the island of Mauritius is a jewel in the heart of the Indian Ocean, guaranteed to seduce you with its authentic charm.

BLACK RIVER

Naturally privileged, sheltered from the wind, and with little rainfall, the west coast of Mauritius boasts the island's most beautiful beaches. The Rivière Noire region, in the southwest of the island, features a lush hinterland thanks to its well-preserved nature park. There are numerous leisure activities to suit those who enjoy relaxation, water sports, or nature: windsurfing, diving, forest hikes, golf, and, of course, restaurants and clubs where one can unwind and savour the Mauritian way of life from morning to night.





LEGEND HILL

Resort & Spa *****



Legend Hill welcomes you to a legendary experience of excellence and style on this paradise island.

Located on the west coast, the resort has one of the most spectacular views of the Mauritian bay. Its architecture blends harmoniously with the landscape, achieving a unique feeling of indoor-outdoor fusion.

The decor reflects the spirit of South African lodge houses. The combined elegance and rusticity of the wood for the furniture, natural shimmering ethnic fabrics to remind you that in Mauritius, the spirit of gentle living is an art we nurture on a daily basis.

Each area has been designed to offer a legendary experience: villas, flats, boutique hotel, bar and restaurants, spa, fitness club, beach club, infinity pool...

Follow us on Instagram
[@legendhill.mauritius](https://www.instagram.com/legendhill.mauritius)



CHAMAREL VILLA NO. 3


 M E R



LEGEND HILL
 — CONCIERGE, SPA & RESORT —
 MAURITIUS

A, B, C, D : Appartements & Penthouses

1, 2 et 5 : Villas Blackstone

3, 4, 8, 9 et 10 : Villas Chamarel

6 et 7, 11 à 23 : Villas Bengali

P : Parkings couverts

P : Parkings à ciel ouvert

B1 - B3 : Bloc Boutique Hotel



VILLA AVAILABLE FOR PURCHASE
IN THE HEART OF A LUXURY *****
RESORT IN MAURITIUS

VILLA CHAMAREL

It is in this sumptuous and intimate setting that Chamarel Villa No.3 overlooks the lagoon, facing Le Morne.

The villa is a magnificent living space, with a terrace and infinity pool. The spacious living areas offer impeccable interior features, including an open kitchen, 5 bedrooms with en-suite bathrooms, dressing room, and laundry room. Noble materials and ethnic patterns create an unmatched beauty in the décor.

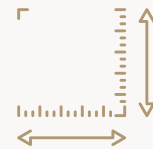
The owner can enjoy the same five-star service level for the villa if they wish to rent it out, or considerable benefits if they wish to live there year-round.



10 people



5 bedrooms with
bathrooms



677.3m² of living space



1291m² of land area

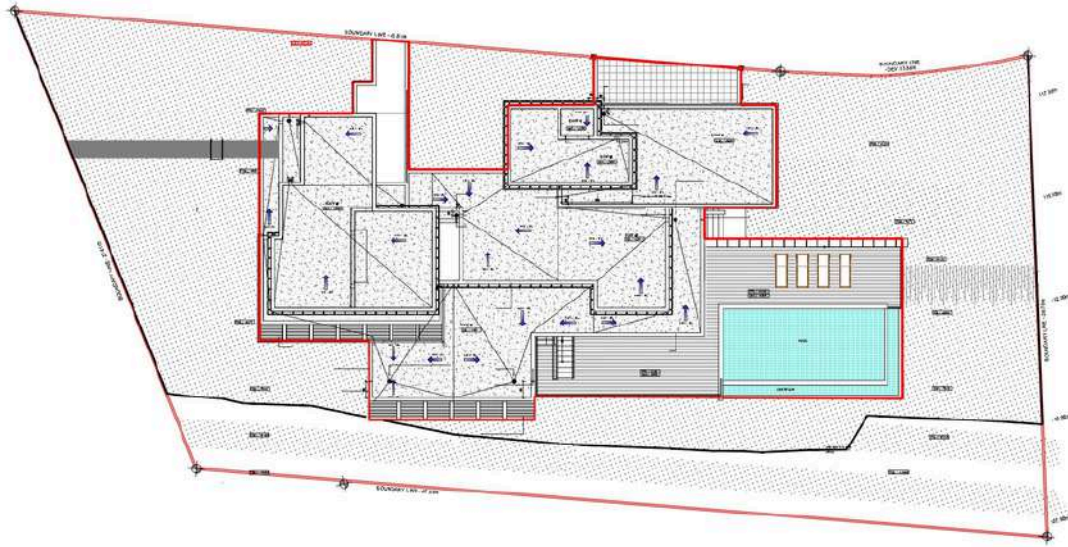


36m² of private infinity
pool

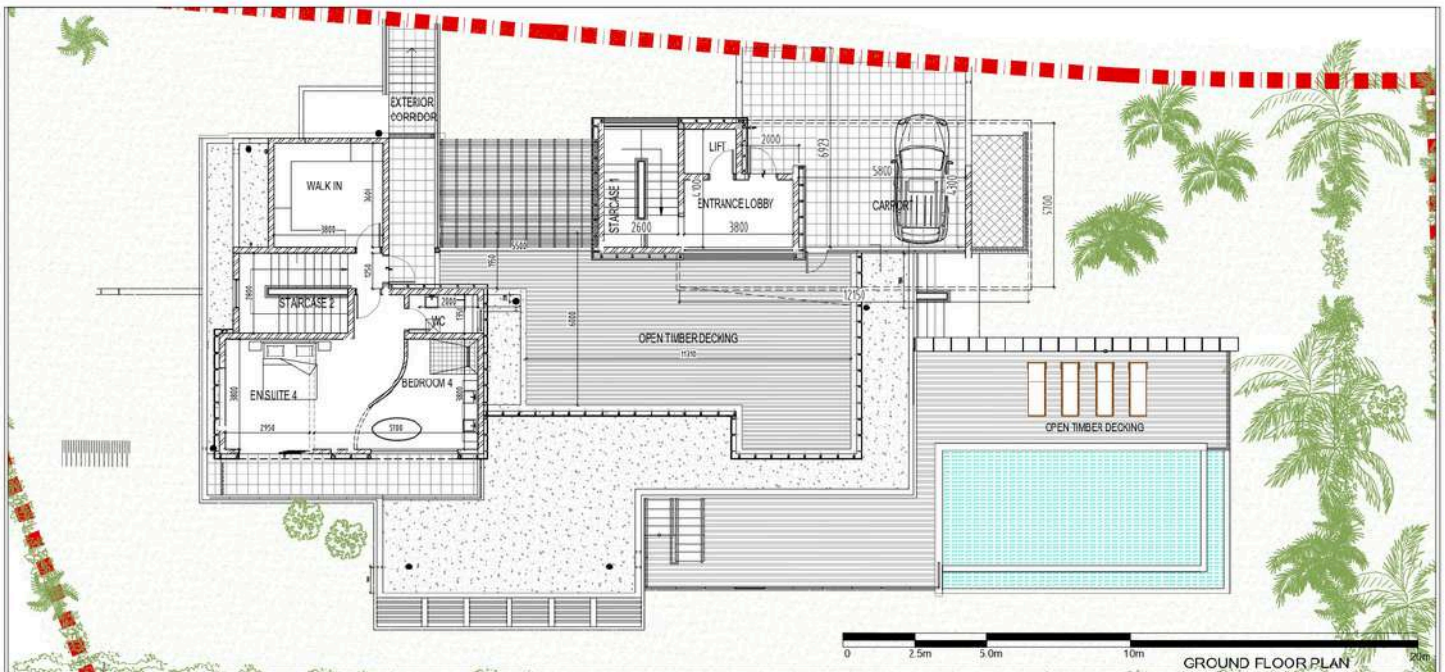


+180° view of the
Mauritian lagoon from
every room in the villa

PLOT 3 AREA - 1291m²



| | | | | | | | | | | | | |
|---|----------|--|---|--|---|--|------|-----|-------|-------|----------|---|
| La disposition des équipements est donnée à titre indicatif. La société se réserve la possibilité d'apporter à ce plan les modifications dues à des impératifs d'ordre technique ou administratif. Les surfaces indiquées sont susceptibles de subir de légères variations. Les retombées de poutres, soffites, faux plafonds, canalisations et radiateurs ne figurent pas sur ce plan. Tolérance 5%. | | <p>Site d'origine:</p> <p>Iconic View Ltd</p> <p>Lot 3, Avenue des Capotaillades 28 Capotaillades - Borne 72001 Mauritius Tél: 01 43 02 23</p> | <p>Client:</p> <p>M J DEVELOPPEMENT PROJET/CONSTRUCTEUR</p> <p>18 Avenue d'Europe 1400 ANVALET Mauritius Tél: 01 43 46 23 10 30</p> | <p>Architecte:</p> <p>ARCHITECTS STUDIO</p> <p>Vice business park MORUE Mauritius Tél: 4333437</p> | <p>Site d'origine:</p> <p>Ehwaro & Associates Ltd.</p> <p>Vice business park MORUE Mauritius Tél: 433 43 43</p> | <p>CHAMAREL VILLA LOT 3 SITE PLAN</p> <table><tr><td>DATE</td><td>REV</td><td>REVIS</td></tr><tr><td>N.T.S</td><td>17/07/23</td><td>0</td></tr></table> | DATE | REV | REVIS | N.T.S | 17/07/23 | 0 |
| DATE | REV | REVIS | | | | | | | | | | |
| N.T.S | 17/07/23 | 0 | | | | | | | | | | |

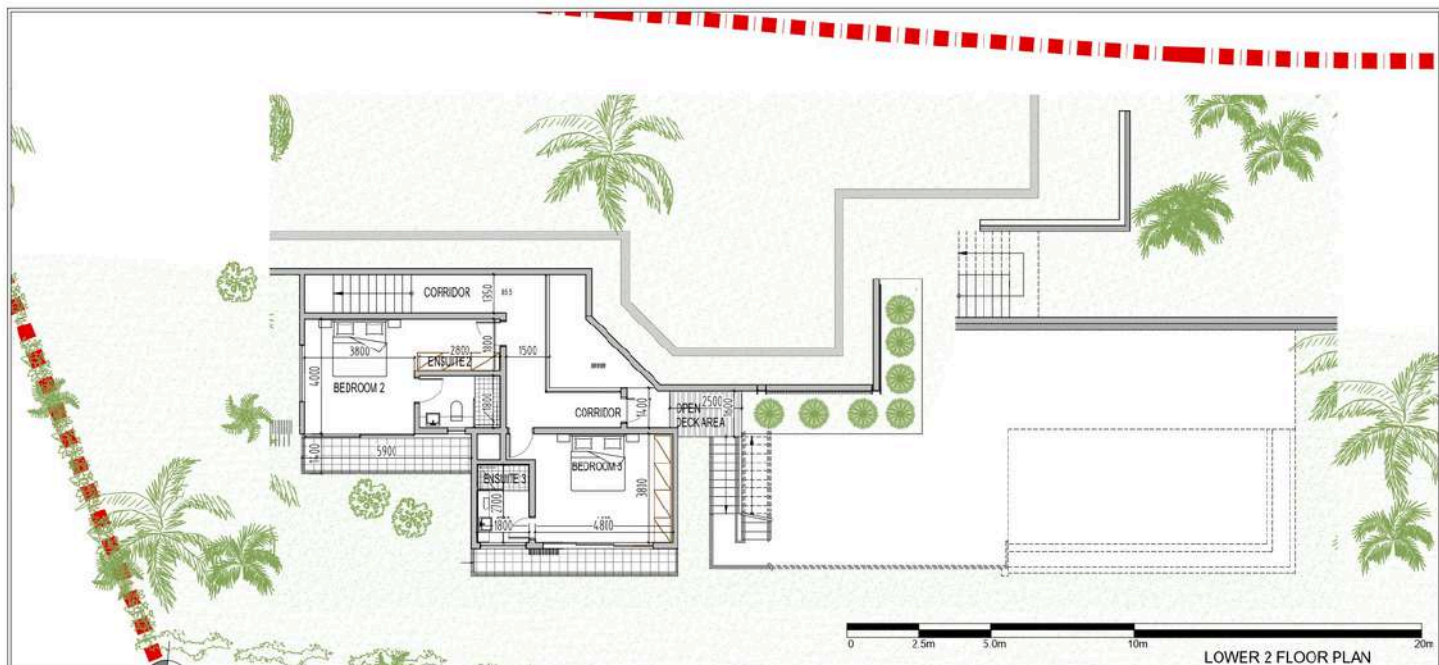


| | | | | | | | | |
|---------------------------------|--|-------|-----------------|--|------|--|--|-------|
| TOTAL SURFACE DE VIE | | 677.3 | MASTER BEDROOM | | 21.2 | BICHORILLATION | | 2.4 |
| TOTAL SURFACE DE VIE INTERIEURE | | 330.7 | MASTER BATHROOM | | 10 | STAIRCASE 2 | | 10.5 |
| | | | MASTER WARDROBE | | 6.5 | GUEST WC | | 3.6 |
| | | | BEDROOM 1 | | 18.3 | WINE CELLAR | | 6.2 |
| | | | EN-SUITE 1 | | 5.4 | TOTAL SURFACE DE VIE EXTERIEURE | | 346.6 |
| ENTRANCE LOBBY | | 8 | BEDROOM 2 | | 20.7 | COVERED TERRACE | | 54.6 |
| OPTIONAL LIFT | | 3.1 | EN-SUITE 2 | | 5.1 | CARPORT | | 20 |
| STAIRCASE 1 | | 10.7 | BEDROOM 3 | | 20.1 | OPEN DECKING | | 139 |
| OPTIONAL STORE | | 1.4 | EN-SUITE 3 | | 4.6 | DRYING YARD | | 9 |
| LIVING | | 19.1 | BEDROOM 4 | | 21 | EXTERIOR CORRIDOR | | 15 |
| DINING | | 12.6 | EN-SUITE 4 | | 11.5 | INTERNAL GARDEN TIMBER DECKING | | 21 |
| KITCHEN | | 24.6 | WC 4 | | 2.7 | POOL | | 73 |
| BACK KITCHEN | | 1.8 | DRESSING 4 | | 6.8 | TOTAL SURFACE CONSTRUTE (INTERIOR + EXTERIOR+WALL) | | 838.9 |
| LAUNDRY | | 3.6 | PASSAGE | | 4.5 | POOL | | 30 |
| STORE 2 (BELOW STAIR) | | 3.4 | CORRIDOR | | 41.6 | | | |
| STAIRCASE 2 | | 3.6 | | | | | | |

| | | | | | | | | | | | | |
|---|----------|--|--|--|--|--|------|-----|-------|-------|----------|---|
| La disposition des équipements est donnée à titre indicatif. La société se réserve la possibilité d'apporter à ce plan les modifications dues à des impératifs d'ordre technique ou administratif. Les surfaces indiquées sont susceptibles de subir de légères variations. Les retombées de poutres, soffites, faux plafonds, canalisations et radiateurs ne figurent pas sur ce plan. Tolérance 5%. | | <p>Site d'origine:</p> <p>Iconic View Ltd</p> <p>Lot 3, Avenue des Capotaillades 28 Capotaillades - Borne 72001 Mauritius Tél: 01 43 02 22 23</p> | <p>Client:</p> <p>M J DEVELOPPEMENT PROJET/CONSTRUCTEUR</p> <p>18 Avenue d'Europe 1400 ANVALET Mauritius Tél: 01 43 46 23 10 30</p> | <p>Architecte:</p> <p>ARCHITECTS STUDIO Vice business park MORUE Mauritius Tél: 4333437</p> | <p>Site d'origine:</p> <p>Ehwaro & Associates Ltd.</p> <p>Vice business park MORUE Mauritius Tél: 433 43 43</p> | <p>CHAMAREL VILLA LOT 3 GROUND FLOOR PLAN</p> <table><tr><td>DATE</td><td>REV</td><td>REVIS</td></tr><tr><td>N.T.S</td><td>17/07/23</td><td>0</td></tr></table> | DATE | REV | REVIS | N.T.S | 17/07/23 | 0 |
| DATE | REV | REVIS | | | | | | | | | | |
| N.T.S | 17/07/23 | 0 | | | | | | | | | | |



| | | | | |
|--|------|-------|---|--------------|
| TOTAL SURFACE DE VIE | | 677.3 | | |
| TOTAL SURFACE DE VIE INTERIEURE | | 330.7 | | |
| ENTRANCE LOBBY | 3.1 | | MASTER BEDROOM | 11.3 |
| OPTIONAL LIFT | 3.1 | | MASTER BATHROOM | 10 |
| STAIRCASE 1 | 10.7 | | MASTER WARDROBE | 2.5 |
| OPTIONAL STORE | 14 | | BEDROOM 1 | 18.3 |
| LIVING | 18.1 | | EN-SUITE 1 | 5.4 |
| DINING | 12.6 | | BEDROOM 2 | 20.7 |
| KITCHEN | 24.6 | | EN-SUITE 2 | 5.1 |
| BACK KITCHEN | 3.8 | | BEDROOM 3 | 20.1 |
| LAUNDRY | 3.6 | | EN-SUITE 3 | 4.9 |
| STORE 1 (BELOW STAIR) | 3.4 | | BEDROOM 4 | 21 |
| STAFF WC | 3.6 | | EN-SUITE 4 | 11.5 |
| | | | WC 4 | 2.7 |
| | | | DRESSING 4 | 0.9 |
| | | | PASSAGE CORRIDOR | 4.5 |
| | | | | 41.8 |
| | | | BOH CIRCULATION | 2.4 |
| | | | STAIRCASE 2 | 10.5 |
| | | | GUEST WC | 3.6 |
| | | | WINE CELLAR | 6.2 |
| | | | TOTAL SURFACE DE VIE EXTERIEURE | 346.6 |
| | | | COVERED TERRACE | 64.6 |
| | | | CARPORT | 25 |
| | | | OPEN DECKING | 130 |
| | | | DRYING YARD | 0 |
| | | | EXTERIOR CORRIDOR | 15 |
| | | | INTERNAL GARDEN TIMBER DECKING | 21 |
| | | | ROOF OPEN TIMBER DECKING | 73 |
| | | | TOTAL SURFACE CONSTRUTE (INTERIOR + EXTERIOR+WALL) | 838.9 |
| | | | POOL | 30 |



| | | | | |
|--|------|-------|---|--------------|
| TOTAL SURFACE DE VIE | | 677.3 | | |
| TOTAL SURFACE DE VIE INTERIEURE | | 330.7 | | |
| ENTRANCE LOBBY | 3.1 | | MASTER BEDROOM | 11.3 |
| OPTIONAL LIFT | 3.1 | | MASTER BATHROOM | 10 |
| STAIRCASE 1 | 10.7 | | MASTER WARDROBE | 2.5 |
| OPTIONAL STORE | 14 | | BEDROOM 1 | 18.3 |
| LIVING | 18.1 | | EN-SUITE 1 | 5.4 |
| DINING | 12.6 | | BEDROOM 2 | 20.7 |
| KITCHEN | 24.6 | | EN-SUITE 2 | 5.1 |
| BACK KITCHEN | 3.8 | | BEDROOM 3 | 20.1 |
| LAUNDRY | 3.6 | | EN-SUITE 3 | 4.9 |
| STORE 1 (BELOW STAIR) | 3.4 | | BEDROOM 4 | 21 |
| STAFF WC | 3.6 | | EN-SUITE 4 | 11.5 |
| | | | WC 4 | 2.7 |
| | | | DRESSING 4 | 0.9 |
| | | | PASSAGE CORRIDOR | 4.5 |
| | | | | 41.8 |
| | | | BOH CIRCULATION | 2.4 |
| | | | STAIRCASE 2 | 10.5 |
| | | | GUEST WC | 3.6 |
| | | | WINE CELLAR | 6.2 |
| | | | TOTAL SURFACE DE VIE EXTERIEURE | 346.6 |
| | | | COVERED TERRACE | 64.6 |
| | | | CARPORT | 25 |
| | | | OPEN DECKING | 130 |
| | | | DRYING YARD | 0 |
| | | | EXTERIOR CORRIDOR | 15 |
| | | | INTERNAL GARDEN TIMBER DECKING | 21 |
| | | | ROOF OPEN TIMBER DECKING | 73 |
| | | | TOTAL SURFACE CONSTRUTE (INTERIOR + EXTERIOR+WALL) | 838.9 |
| | | | POOL | 30 |



FRONT ELEVATION



RHS ELEVATION

La disposition des équipements est donnée à titre indicatif. La société se réserve la possibilité d'apporter à ce plan les modifications dues à des impératifs d'ordre technique ou administratif. Les surfaces indiquées sont susceptibles de subir de légères variations. Les retombées de poutres, soffites, faux plafonds, canalisations et refaireurs ne figurent pas sur ce plan. Tolérance 5%.

Site d'origine
KONG VIM LID
100 Avenue des Palmiers, 2000
20 Century - Ebene 72001
Mauritius
Tél: 03 433 3331



Projet
M J DEVELOPPEMENT
100 Avenue des Palmiers, 2000
20 Century - Ebene 72001
Mauritius
Tél: 03 433 3331

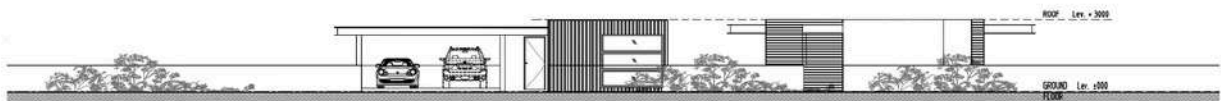


Architecte
ARCHITECTS STUDIO
100 Avenue des Palmiers, 2000
20 Century - Ebene 72001
Mauritius
Tél: 03 433 3331

Site d'origine
Eltoro & Associates Ltd.
100 Avenue des Palmiers, 2000
20 Century - Ebene 72001
Mauritius
Tél: 03 433 3331

CHAMAREL VILLA
LOT 3
ELEVATIONS

| Etat | MT | ETAT |
|-------|----------|------|
| N.T.D | 17.07.25 | 0 |



REAR ELEVATION



LHS ELEVATION

La disposition des équipements est donnée à titre indicatif. La société se réserve la possibilité d'apporter à ce plan les modifications dues à des impératifs d'ordre technique ou administratif. Les surfaces indiquées sont susceptibles de subir de légères variations. Les retombées de poutres, soffites, faux plafonds, canalisations et refaireurs ne figurent pas sur ce plan. Tolérance 5%.

Site d'origine
KONG VIM LID
100 Avenue des Palmiers, 2000
20 Century - Ebene 72001
Mauritius
Tél: 03 433 3331



Projet
M J DEVELOPPEMENT
100 Avenue des Palmiers, 2000
20 Century - Ebene 72001
Mauritius
Tél: 03 433 3331

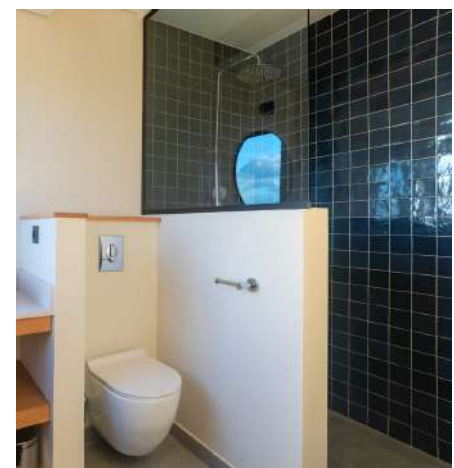
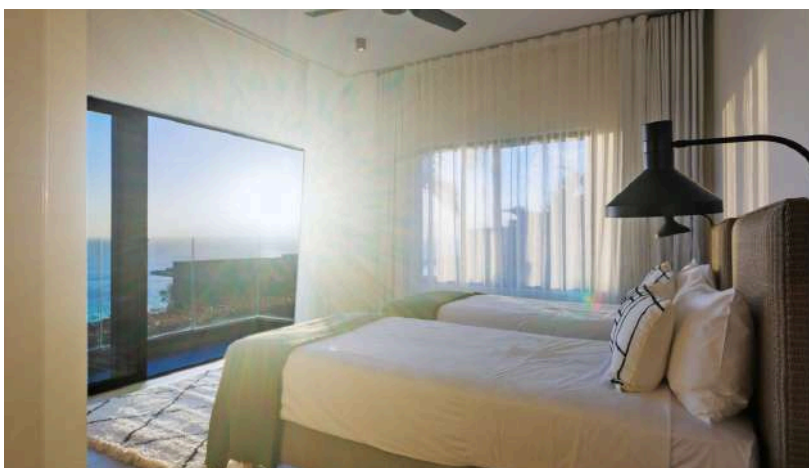


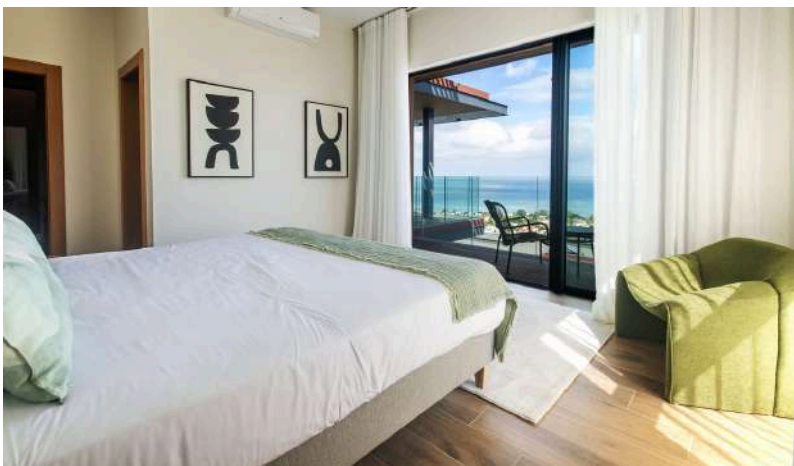
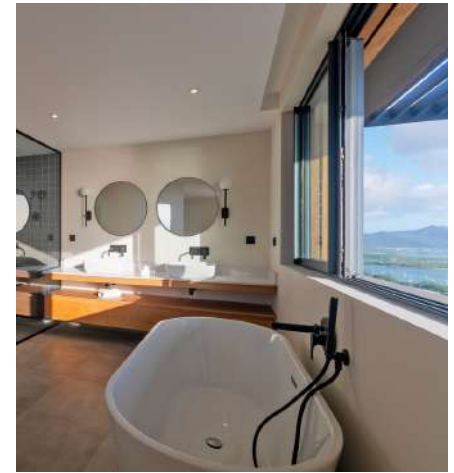
Architecte
ARCHITECTS STUDIO
100 Avenue des Palmiers, 2000
20 Century - Ebene 72001
Mauritius
Tél: 03 433 3331

Site d'origine
Eltoro & Associates Ltd.
100 Avenue des Palmiers, 2000
20 Century - Ebene 72001
Mauritius
Tél: 03 433 3331

CHAMAREL VILLA
LOT 3
ELEVATIONS

| Etat | MT | ETAT |
|-------|----------|------|
| N.T.D | 17.07.25 | 0 |







LEGEND HILL UNIVERSE

LEGENDARY EXPERIENCES





HIGH-END HOTEL SERVICE

OUR RANGE OF ACCOMMODATION

It is in this sumptuous and intimate setting that rooms, suites, villas, apartments, and penthouses overlook the lagoon.

Legend Hill caters to the desires of all travellers with a diverse range of accommodation options:

ROOMS & SUITES

APARTMENTS

VILLAS

PENTHOUSES

The entire complex enjoys the same five-star service level.



24/7 on-site security



Housekeeper:
daily cleaning



Laundry service



Household linen provided



High-end
concierge service



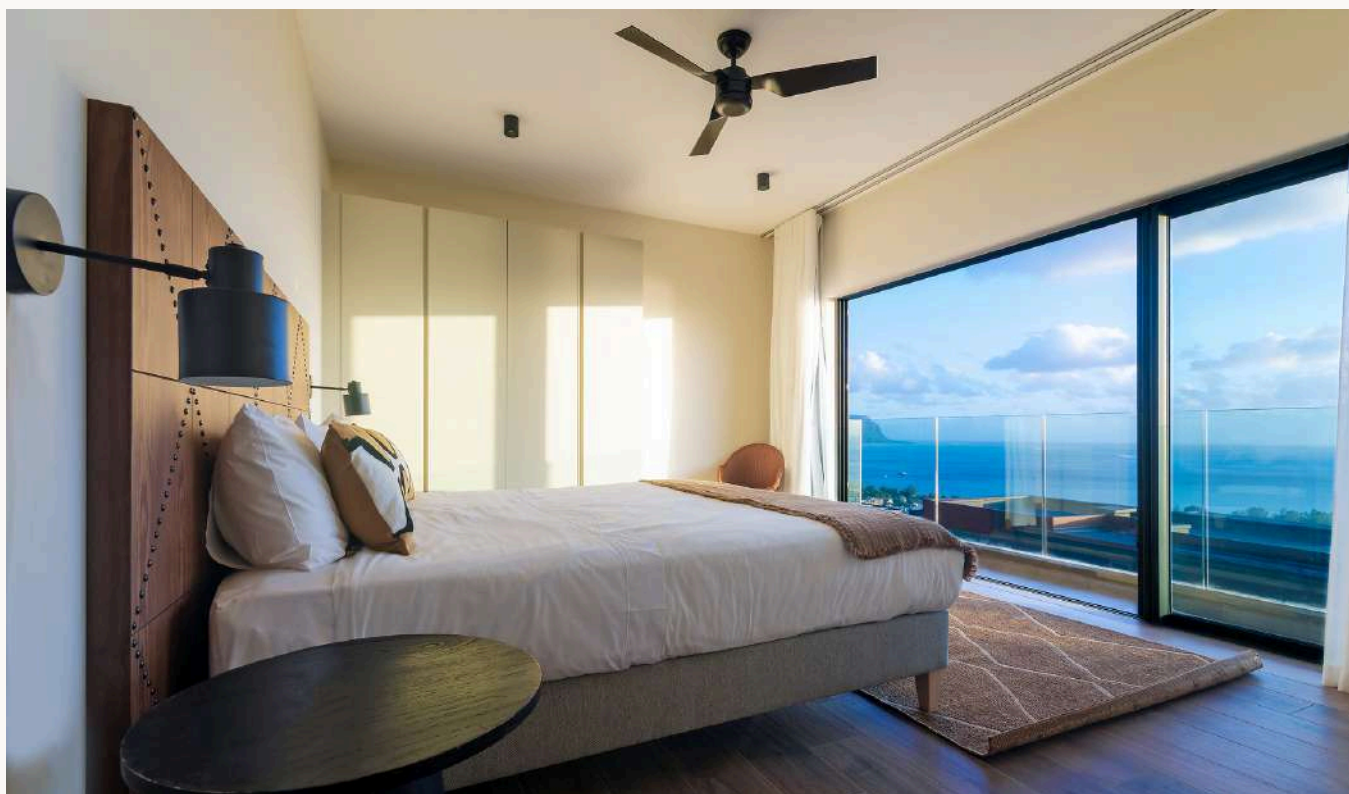
ROOMS & SUITES

HIGH-END WITH SEA VIEW

| CATEGORIES | ROOM CAPACITY |
|--|---|
| LUXURY ROOM WITH OCEANVIEW | 44m ² of total living space 1 bedroom 10m ² of private terrace Exceptional sea view |
| LEGEND SUITE WITH OCEANVIEW | 36m ² of total living space 1 master bedroom with separate kitchen and lounge 42m ² of cross-through private terrace Exceptional sea view |

Amenities of our rooms & suites:

Single room, option for connecting rooms, minibar, parking, private terrace, sea view, safe, high-speed Wi-Fi, television with international channels, kettles with a selection of the finest local teas, coffee machine, air conditioning, exceptional toiletries.





VILLAS, PENTHOUSES, APARTMENTS

EXCLUSIVE STAY

| CATEGORIES | ROOM CAPACITY |
|--|--|
| LEGEND APARTMENT WITH OCEAVIEW | 209m ² of total living space 3 bedrooms 74m ² of outdoor living space Shared pool Exceptional sea view |
| LEGEND APARTMENT WITH OCEANVIEW & PRIVATE POOL | 200m ² of total living space 3 bedrooms 66m ² of outdoor living space 20m ² of private pool Exceptional sea view |
| LEGEND SIGNATURE PENTHOUSE WITH OCEANVIEW | 443m ² of total living space 4 bedrooms 215m ² of outdoor living space 33m ² of private pool Exceptional sea view |
| LEGEND VILLA WITH OCEANVIEW & PRIVATE POOL 4 BEDROOMS | 455m ² of total living space 4 bedrooms 194m ² of outdoor living space 32m ² of private pool Exceptional sea view |
| LEGEND VILLA WITH OCEANVIEW & PRIVATE POOL 5 BEDROOMS | 677m ² of total living space 5 bedrooms 347m ² of outdoor living space 36m ² of private pool Exceptional sea view |

The amenities of our villas, penthouses and flats:

Mini-bar, parking, sea view, safe, high speed WI-FI, television with international channels, kettles with a selection of the best local teas, coffee machine, air-conditioning, exceptional greeting items.



A SIGNATURE CULINARY EXPERIENCE

GLENN VIEL

*** MICHELIN-STARRED CHEF



Chef Glenn Viel, at the helm of the renowned L'Oustau de Baumanière in Les Baux-de-Provence since 2015, is one of the 10 French chefs recognized for his commitment to responsible gastronomy, earning the "Sustainable Gastronomy" distinction from the Michelin Guide.

With a career marked by iconic restaurants such as Le Meurice, Plaza Athénée in Paris, and Cheval Blanc in Courchevel, he was named "Chef of the Year" by Le Chef in 2020, the same year he earned his third Michelin star. In 2022, he joined the TV show Top Chef as a judge, further solidifying his media presence.

Chef Viel is the mastermind behind the culinary experience at Legend Hill, crafting each menu and overseeing the kitchen team. His collaboration with Legend Hill includes creating menus, recipes, and recruiting kitchen staff.



CULINARY INVITATION



B. VIEW

• CHILL & FOOD •

BISTRONOMIC RESTAURANT

Set right by the pool, it overlooks the ocean in a beach club spirit. Enjoy a gourmet and inspired menu at any time of the day, in a relaxed and cult place devoted to lounging on sunbeds and deckchairs.

Open every day: Breakfast from 7:00 AM to 10:30 AM
Lunch from 12:00 PM to 2:30 PM
Dinner from 7:30 PM to 10:00 PM



SANTOSHA

BAR / VIEW / DRINKS

COCKTAIL BAR

An elegant and intimate lounge bar to enjoy cocktails as you gaze out over the ocean's turquoise waters. At any time of day, immerse yourself in a refreshing oasis for a cozy cocktail and lounge music break.

Open every day:
Tapas from 11:00 AM to 10:00 PM |
Bar from 8:00 AM to 11:00 PM



LE 1812

GOURMET RESTAURANT

Our restaurant is the place to be for a hedonistic experience within a stunning setting. Its menu is designed by the three-starred chef Glenn Viel. Indulge in pure and intense culinary emotions in this magical venue.

Dress code: smart attire (no jeans, shorts, or open shoes for men)
Open from Thursday evening to Sunday noon: Lunch from 12:00 PM to 1:30 PM | Dinner from 7:30 PM to 9:30 PM

AN INVITATION TO RELAXATION



The Legend Spa

The spa skillfully balances natural resources with high technology to create an innovative line of body and facial care. Effective results and unique sensory experiences.



Total area: 225m²
3 single cabins
1 double cabin
1 hammam



Our designed treatments:
Relaxing massage, draining
massage, signature massage,
couple's massage, foot
reflexology, facial and body
treatments, hand and foot beauty

Legend Studio

Treadmills, weight machines, mats and dumbbells are available. You can even be accompanied by a coach for your sports sessions, if you make a reservation with the concierge.





Concierge

Enjoy a luxury stay with top of the range services and constant concern for excellence to benefit from customized activities and events.

A responsive team will make sure you are comfortable and satisfied throughout your idyllic stay.



Private beach club

The Legend Beach Club is an exclusive beach club offering a variety of luxury services, including a bistro restaurant, cocktail bar, infinity pool, massage rooms and tailor-made boat trips. Located on the west coast of Mauritius, the club offers a relaxed, eclectic and refined beach atmosphere, with free shuttles for Legend Hill guests.





EXCLUSIVE PRIVILEGES

FOR LEGENDARY TRAVELERS

PRIORITY ACCESS

As a privileged member, you have first priority for reservations at our restaurants, experiences and events, and much more.

LEGEND BEACH CLUB

Enjoy the elegant comfort and convenience of the exclusive beach club on your doorstep. You have priority access for bookings.

COMMUNITY

Our community provides exclusive areas and events for our owners and travelers. You can meet like-minded people, make friends and create your own legendary 'tribe'.

FRIENDS AND FAMILY

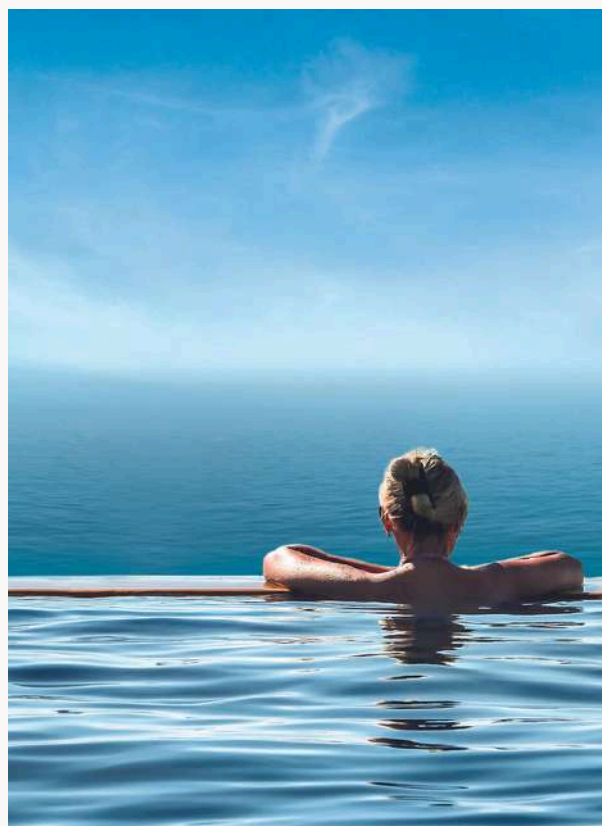
Sharing is essential. That's why we offer your loved ones access to our exclusive services and priority access to the resort.



LEGEND HILL

— RESORT & SPA ***** —

MAURITIUS



Discover our website :

www.legendhill-resort.com

Write to us :

info@legendhill-resort.com

